

A

B

C

D

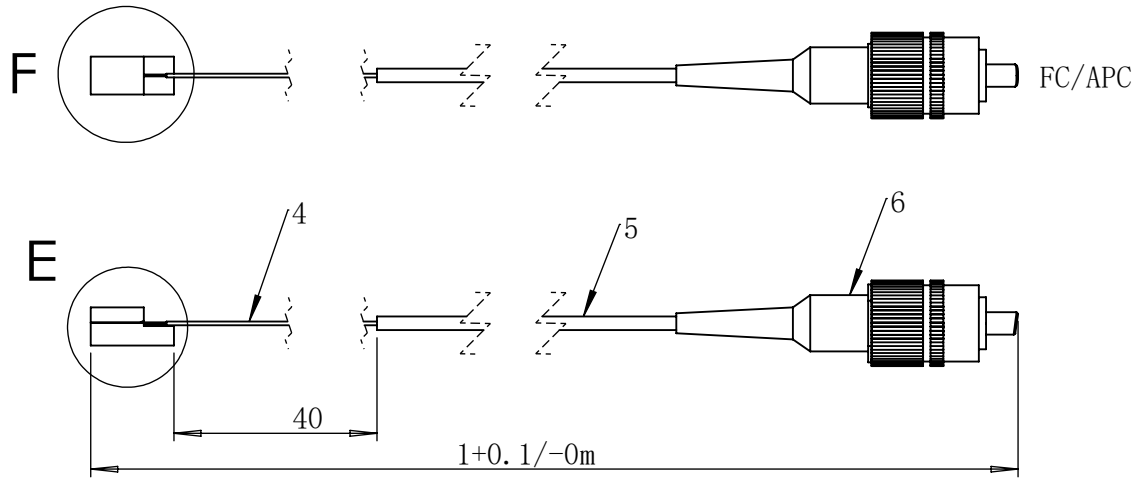
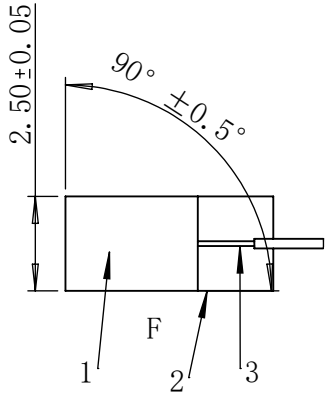
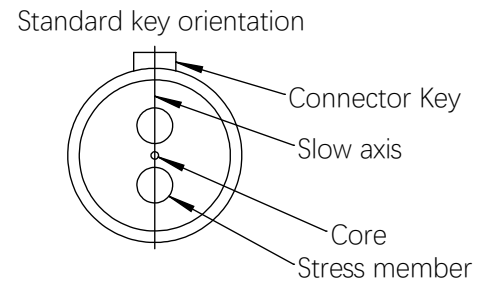
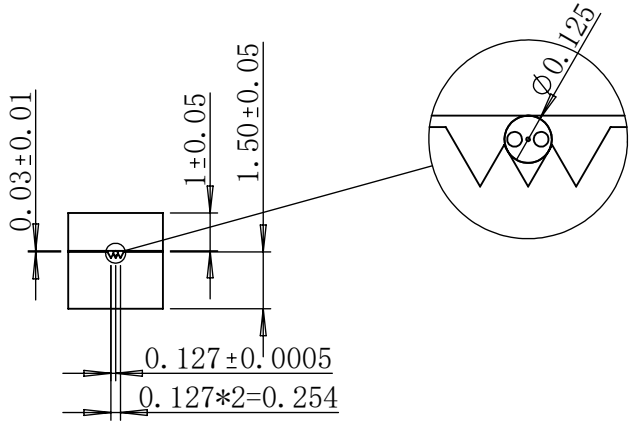
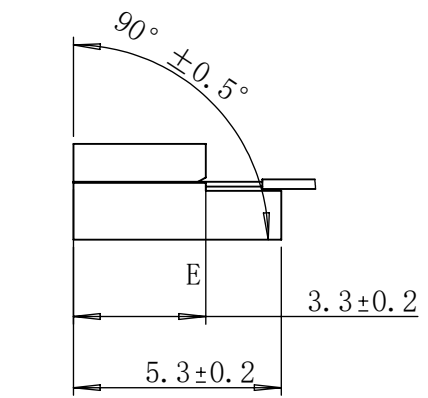
A

B

C

D

FA Channel	
1	dummy fiber
2	PM fiber
3	dummy fiber



ITEM	PART	MATERIAL	DESCRIPTION	QTY
1	Array lid	Glass	2.5x3.5x1	1
2	Array base	Glass	3V-127P-2.5x5.5x3.5x1.5t	1
3	Cladding fiber	Glass	/	1
4	Bare fiber	Glass+Acrylate	Corning PM15-U25D fiber	1
5	Fiber jacket	Hytrel	0.9mm blue loose tube	1
6	Fiber Connector	Nickel plated brass	FC/APC	1

REV.	DESCRIPTION	DATE	REVISED
A		2026/4/15	D2

DIMENSIONS ARE IN MM

NAME	DATE
D2	2026/4/15
Q.A.	Q1
Q1	2026/4/15

PROPRIETARY AND CONFIDENTIAL

THE INFORMATION CONTAINED IN THIS DRAWING IS THE SOLE PROPERTY OF PHIX PHOTONICS ASSEMBLY. ANY REPRODUCTION IN PART OR AS A WHOLE WITHOUT THE WRITTEN PERMISSION OF PHIX PHOTONICS ASSEMBLY IS PROHIBITED.

ALL MACHINED SURFACE TO BE 3.2/

BREAK SHARP CORNERS MAX

TITLE: HV-1ch OD PMFA-FC/APC

SIZE	PART NO. or DWG. NO.	REV
A4	30152779	A

SCALE:2:1 SHEET 1 OF 1