

A

B

C

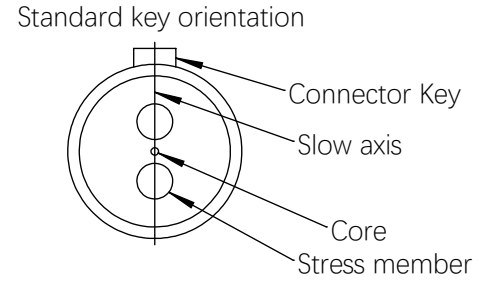
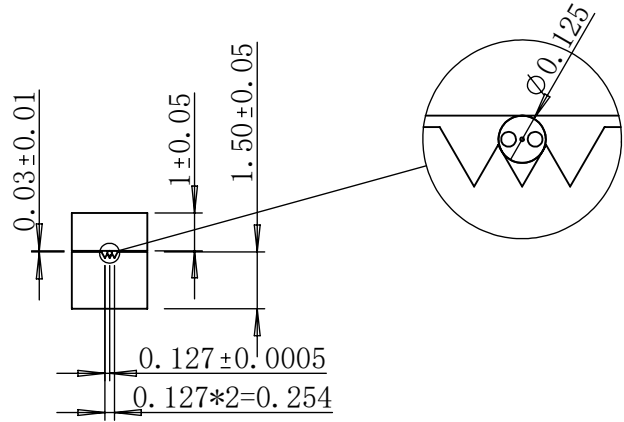
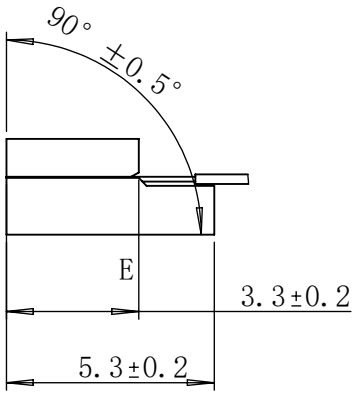
D

A

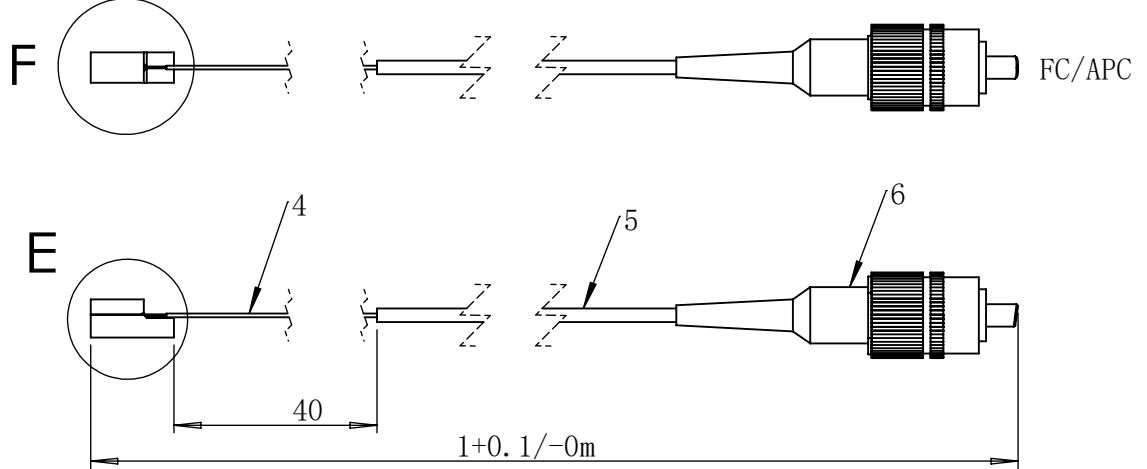
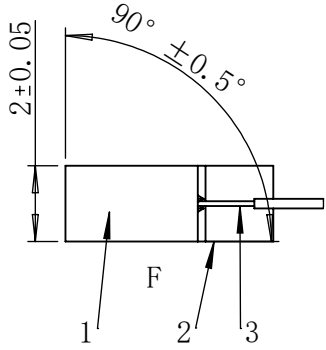
B

C

D



FA Channel	
1	dummy fiber
2	PM fiber
3	dummy fiber



ITEM	PART	MATERIAL	DESCRIPTION	QTY
1	Array lid	Glass	2x3.5x1	1
2	Array base	Glass	3V-127P-2x5.5x3.5x1.5t	1
3	Cladding fiber	Glass	/	1
4	Bare fiber	Glass+Acrylate	Corning PM15-U25D fiber	1
5	Fiber jacket	Hytrel	0.9mm blue loose tube	1
6	Fiber Connector	Nickel plated brass	FC/APC	1

REV.	DESCRIPTION	DATE	REVISED
A		2024/1/23	D2

DIMENSIONS ARE IN MM		NAME	DATE
X ± 0.15 .X ± 0.10 .XX ± 0.05 ANGULAR ± 0.5°	DRAWN	D2	2024/1/23
	Q.A.	Q1	2024/1/23
ALL MACHINED SURFACE TO BE 3.2/		PROPRIETARY AND CONFIDENTIAL THE INFORMATION CONTAINED IN THIS DRAWING IS THE SOLE PROPERTY OF PHIX PHOTONICS ASSEMBLY. ANY REPRODUCTION IN PART OR AS A WHOLE WITHOUT THE WRITTEN PERMISSION OF PHIX PHOTONICS ASSEMBLY IS PROHIBITED.	
BREAK SHARP CORNERS MAX		TITLE: HV-1ch OD PMFA-FC/APC	
SIZE	PART NO. or DWG. NO.	REV	
A4	30152779	A	
SCALE:2:1		SHEET 1 OF 1	

