

1 2 3 4 5 6

A

B

C

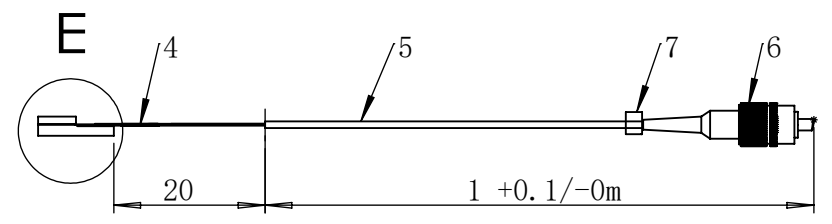
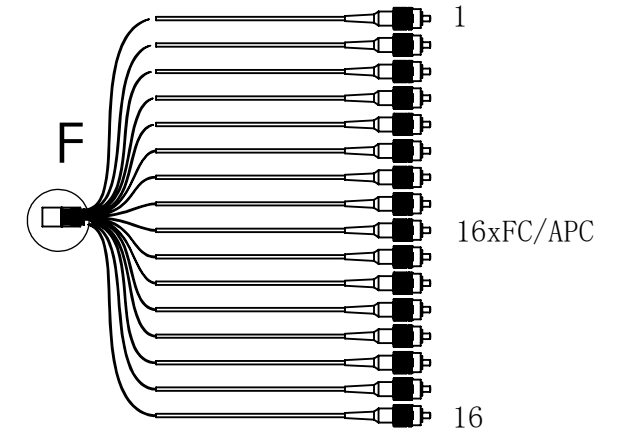
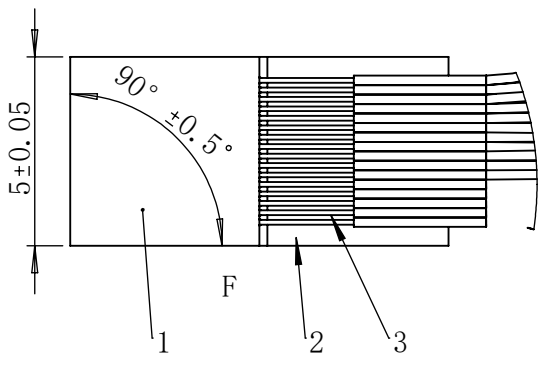
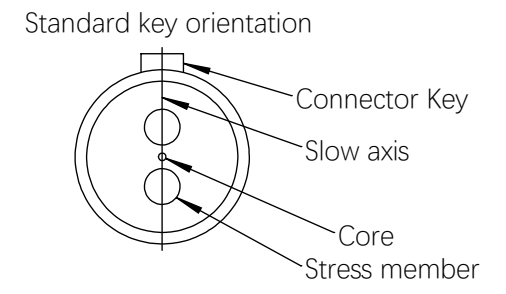
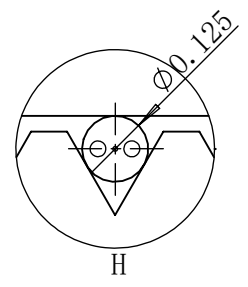
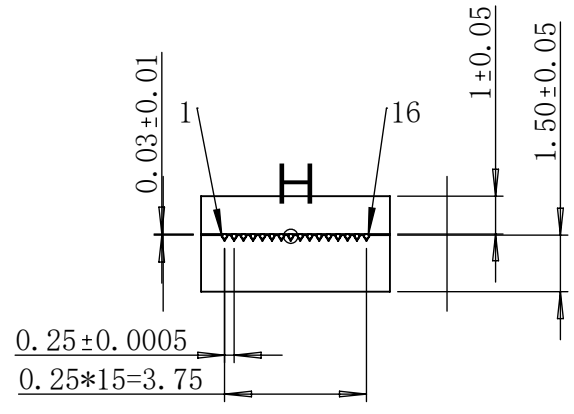
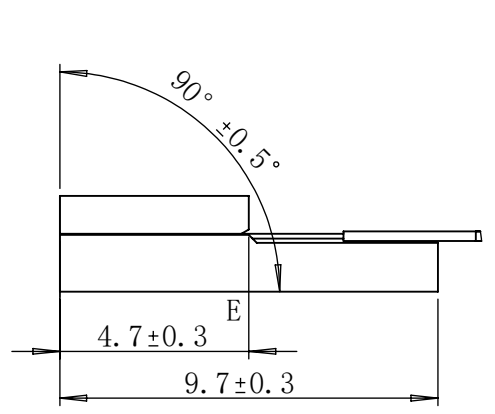
D

A

B

C

D



ITEM	PART	MATERIAL	DESCRIPTION	QTY
1	Array lid	Glass	5x5x1	1
2	Array base	Glass	16V-250P-5x10x5x1.5t	1
3	Cladding fiber	Glass	/	16
4	Bare fiber	Glass+Acrylate	Corning PM15-U25D fiber	16
5	Fiber jacket	Hytrel	0.9mm blue loose tube	16
6	Fiber Connector	Nickel plated brass	FC/APC	16
7	Wear cable marker	Polyethylene	Number : 1-16	16

REV.	DESCRIPTION	DATE	REVISED
A		2024/1/4	D2

DIMENSIONS ARE IN MM		NAME	DATE
X ± 0.15 .X ± 0.10 .XX ± 0.05 ANGULAR ± 0.5°	DRAWN	D2	2024/1/4
	Q.A.	Q1	2024/1/4
PROPRIETARY AND CONFIDENTIAL THE INFORMATION CONTAINED IN THIS DRAWING IS THE SOLE PROPERTY OF PHIX PHOTONICS ASSEMBLY. ANY REPRODUCTION IN PART OR AS A WHOLE WITHOUT THE WRITTEN PERMISSION OF PHIX PHOTONICS ASSEMBLY IS PROHIBITED.			
ALL MACHINED SURFACE TO BE	3.2		
BREAK SHARP CORNERS MAX			

TITLE: DM-16ch PMFA-FC_APC

SIZE	PART NO. or DWG. NO.	REV
A4	30150700 153166	A

SCALE: 1:2 SHEET 1 OF 1